



LogicLibrary

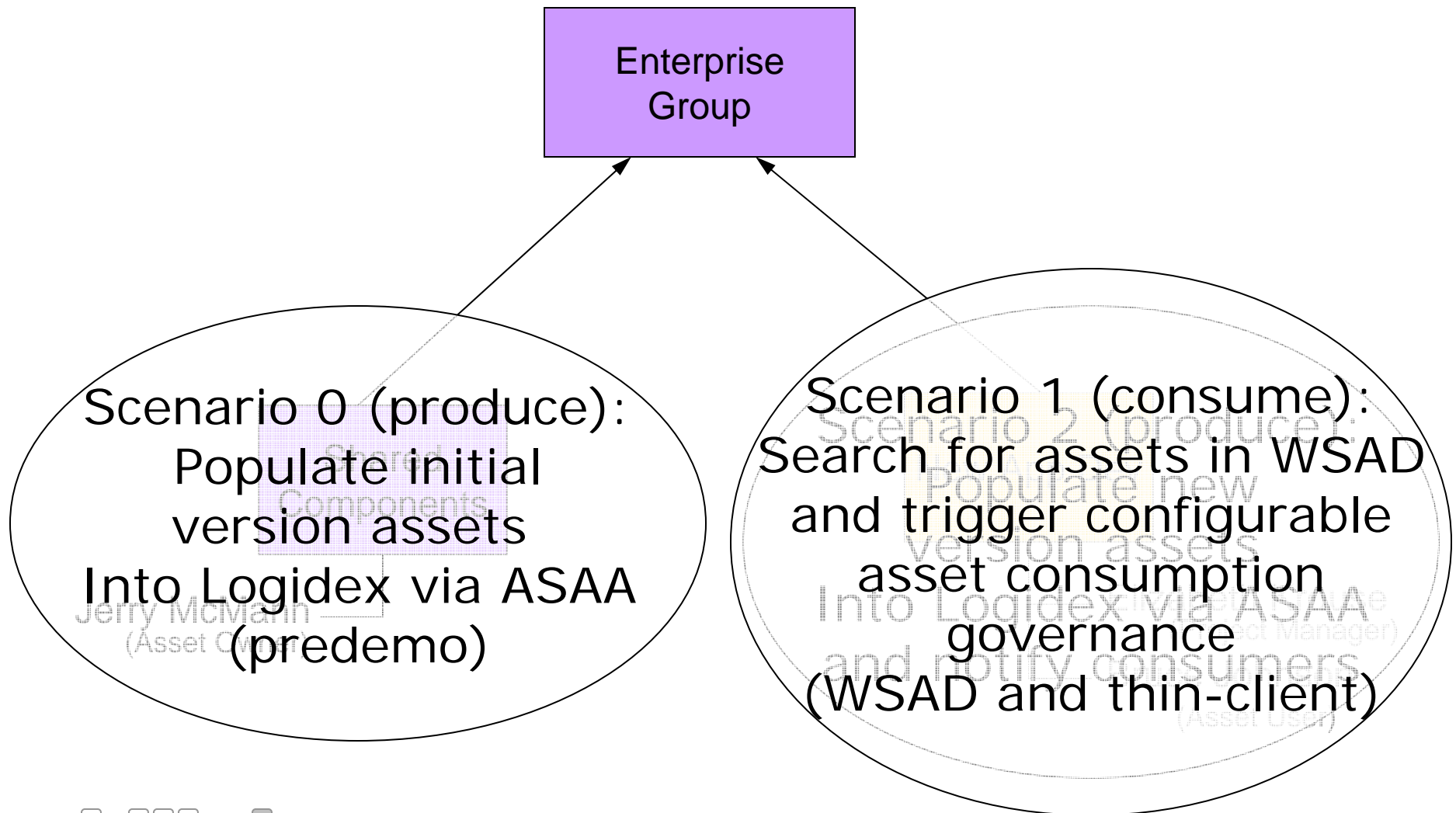


Demo Scenario

ClearCase and ClearQuest



Demo Organization



Scenario 0: Predemo Setup



- Logidex library projects, organization groups, and users configured as shown in prior slide
- ClearCase/ClearQuest UCM configuration defined with two asset streams
 - jEdit REL1
 - jEdit REL1.1
- AnySource Asset Adapter triggered to automatically publish assets upon marking REL1 baseline to RELEASED
 - Owning Group: Shared Components
 - Asset Owner: Jerry McMann

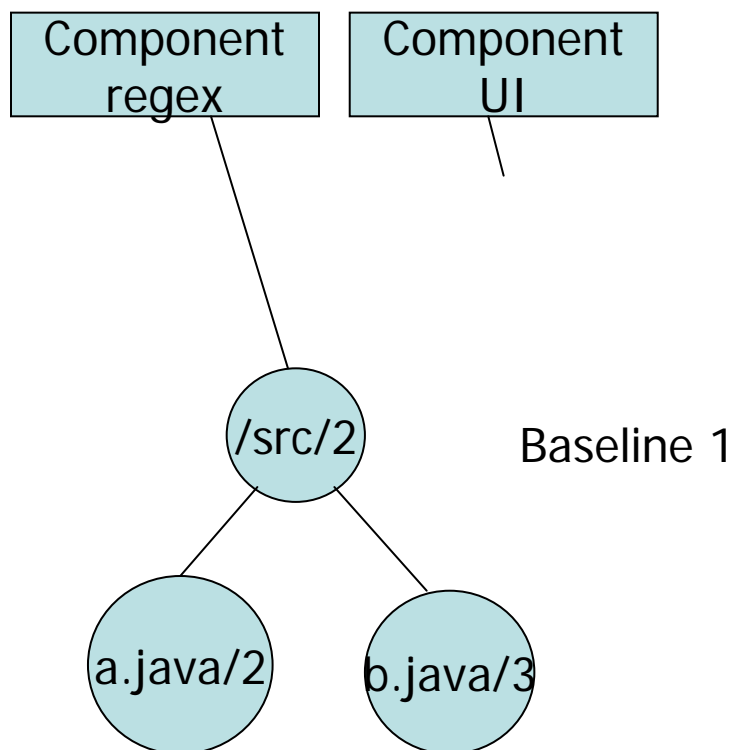
OMG RAS and Logidex AnySource Asset Adapter



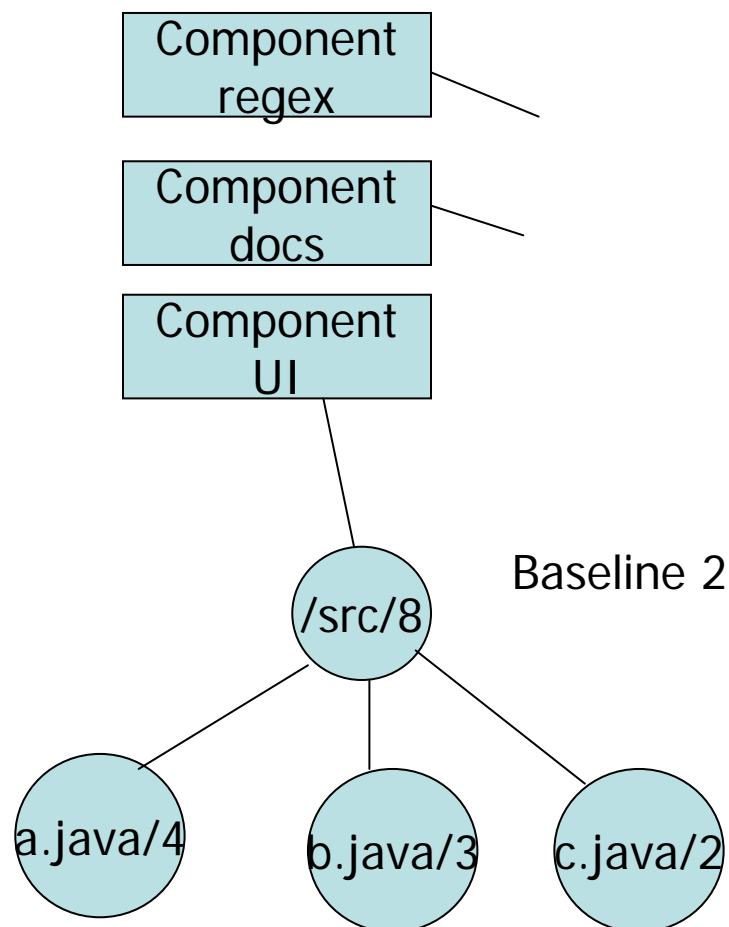
- **OMG RAS (Reusable Asset Specification)**
 - Submitted by IBM/Rational, LogicLibrary (among others) participated in standardization process
 - Describes Asset metadata
 - 3 Types of information
 - Artifacts – type, reference, version
 - Classifiers – name, value
 - Relationships – type, related asset's name/version
- **AnySource Asset Adapter (ASAA)**
 - Automates creation/update of RAS Assets
 - Java framework and configurable XML rules
 - Based on Apache Ant

ClearCase UCM Topology

Stream: Release 1



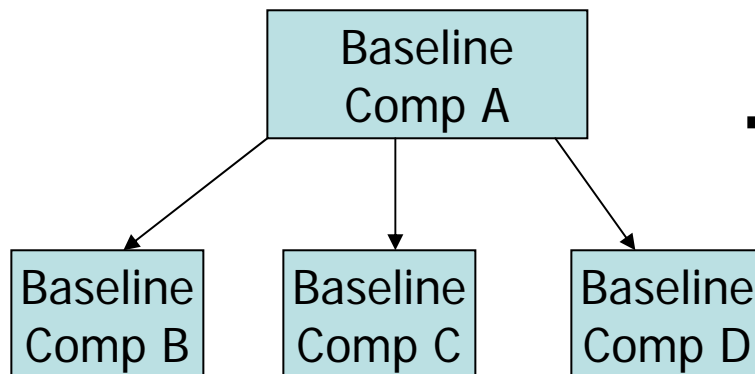
Stream: Release 2



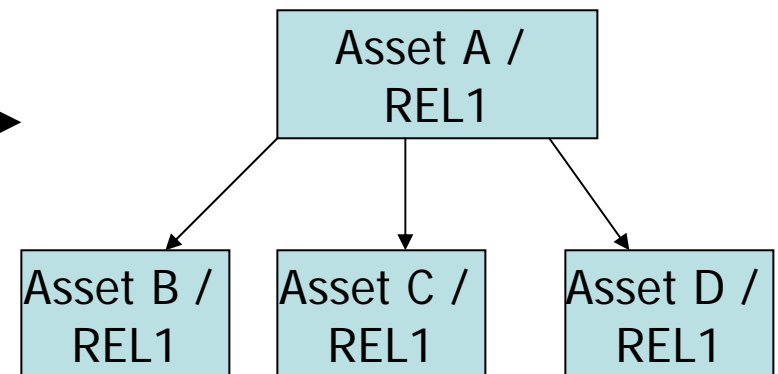
UCM Component -> RAS Asset

CC/CQ UCM

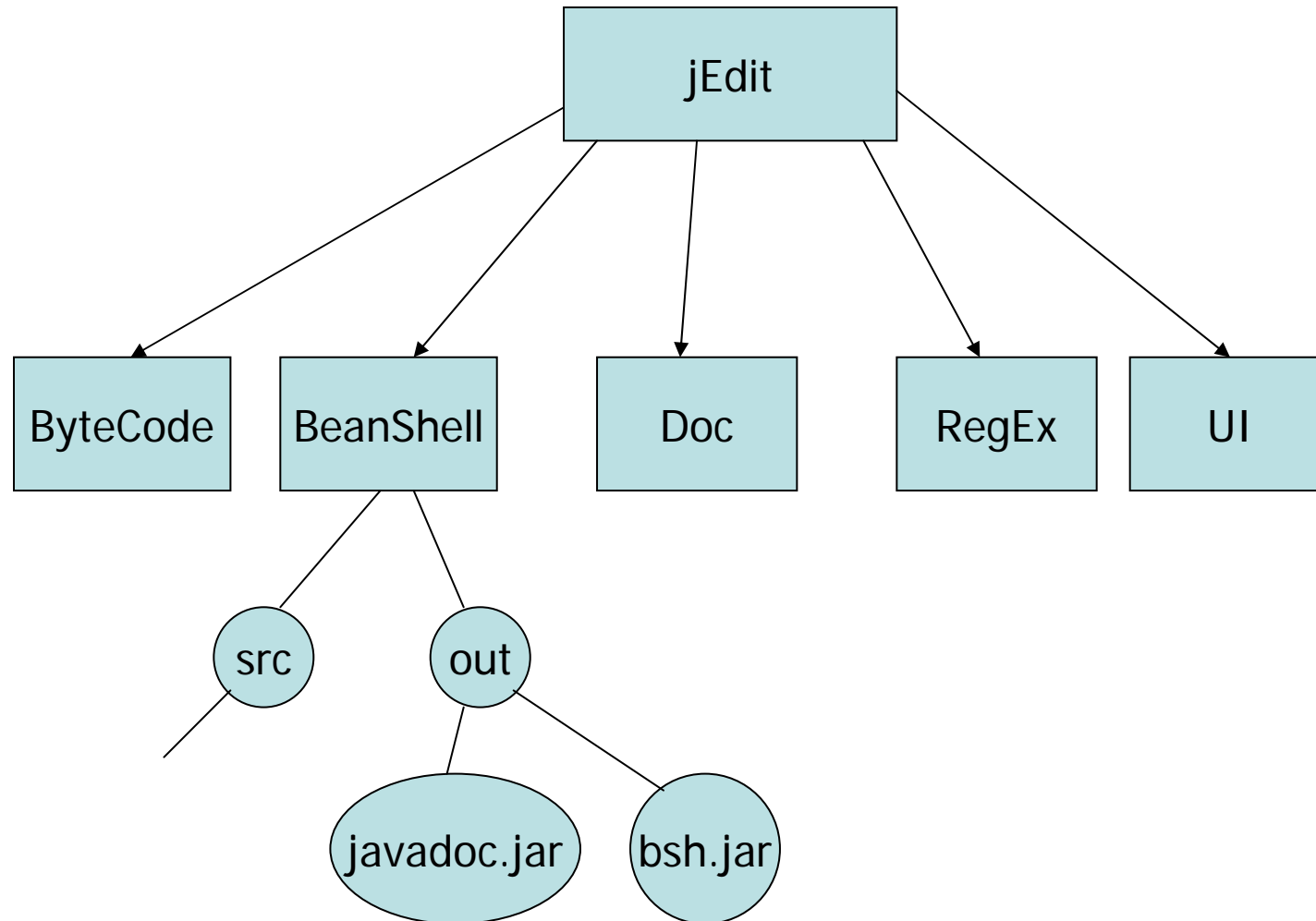
Stream: REL1



RAS



Demo Asset/Component Dependencies within UCM Baseline



Demo Asset Metadata Assembled via ASAA



Artifacts

- Requirements document (by-reference)
- Javadoc jar (by-value)
- Library jar (by-reference)
- ClearQuest changelist – from metadata

Classifiers

- Clearcase stream
- Clearcase baseline

Relationships

- Baseline dependencies
- Version predecessor/successor



Scenario 1: Asset Consumption

1. Jerry McMann represents ASAA-published component within Logidex (Scenario 0)
2. Bruce Johnson searches for component, finds it and determines it is appropriate for his project (at this point Bruce is allowed to view documentation only and is not allowed to access source code or executables)
 - a. Fills out justification comment
 - b. Initiates asset acquisition
3. Elizabeth Krouse is notified of pending asset acquisition for her project
 - a. Elizabeth reviews justification comment and approves asset for use in her project
4. Jerry McMann is notified of planned use of the component
 - a. Jerry reviews justification audit trail and also approves asset for use in the requesting project.
5. Bruce is notified that component is now registered and can import executable file for use in his development project

Scenario 2: New Asset Version and User Notification

- Mark REL1.1 stream as released
- Once triggered ASAA run completes, REL1.1 assets now populated in Logidex and accessible via either thin client or IDE
 - Navigable predecessor/successor relationship established between REL1 and REL1.1 assets
- Email notifications sent to:
 - Bruce Johnson (Asset User) based on automatic subscription and
 - Elizabeth Krouse (Project Manager) based on project acquisition of asset



LogicLibrary

■ ■

Questions?

Contact us: support@logiclibrary.com

